



Worksheet: Adaptations of Birds' Beaks

Match each bird to the correct type of beak.
Read the clues to help you select the correct answer.



Brown Pelican

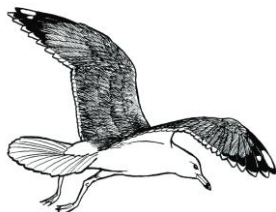
This majestic bird is a hunter, also known as a "bird of prey."

It has a sharp, hooked beak to tear flesh from birds, small mammals and even reptiles.



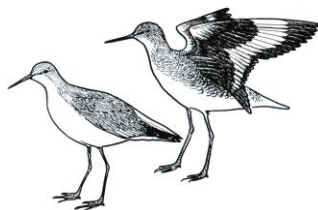
American Bald Eagle

This particular bird will eat most anything that comes its way, from fish to fries. Its beak has a signature black ring, making it easy to identify.



Ring-billed gull

This long-billed shorebird uses its narrow bill to poke into nooks and crevices in the rocks and probe in the mud to reach for prey.



Willet

This marine bird has a large bill with a stretchable pouch for holding fish caught underwater.



Worksheet: Adaptations of Birds' Beaks

ANSWER KEY

Match each bird to the correct type of beak.

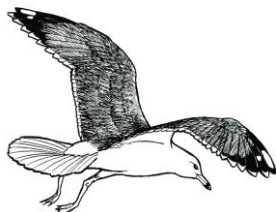
Read the clues to help you select the correct answer.



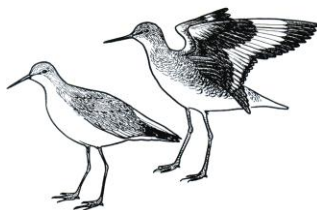
Brown Pelican



American Bald Eagle



Ring-billed gull



Willet

This majestic bird is a hunter, also known as a "bird of prey."

It has a sharp, hooked beak to tear flesh from birds, small mammals and even reptiles.

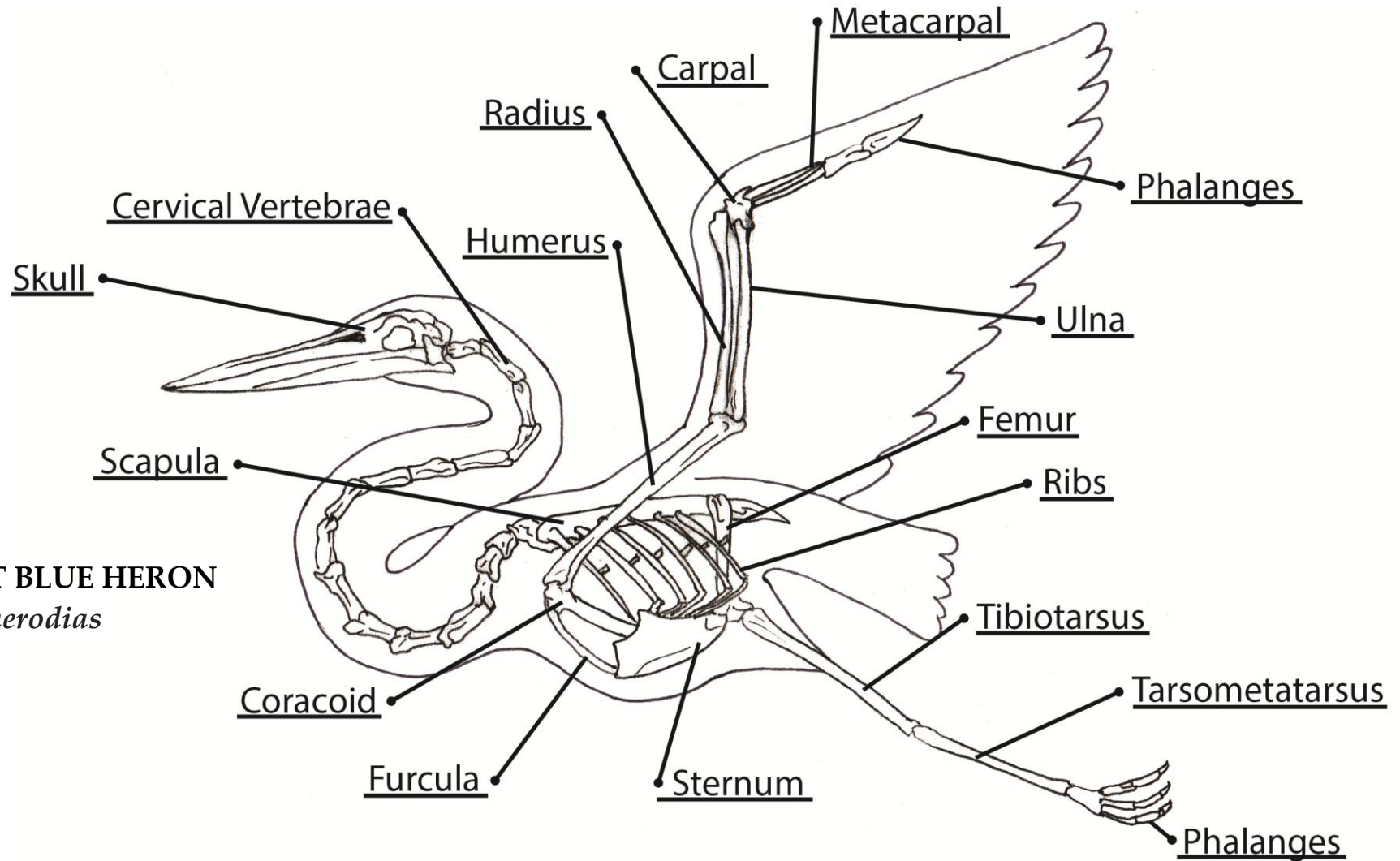
This particular bird will eat most anything that comes its way, from fish to fries. Its beak has a signature black ring, making it easy to identify.

This long-billed shorebird uses its narrow bill to poke into nooks and crevices in the rocks and probe in the mud to reach for prey.

This marine bird has a large bill with a stretchable pouch for holding fish caught underwater.



Graphic: Parts of a Bird Skeleton Answer Key



GREAT BLUE HERON
Ardea herodias



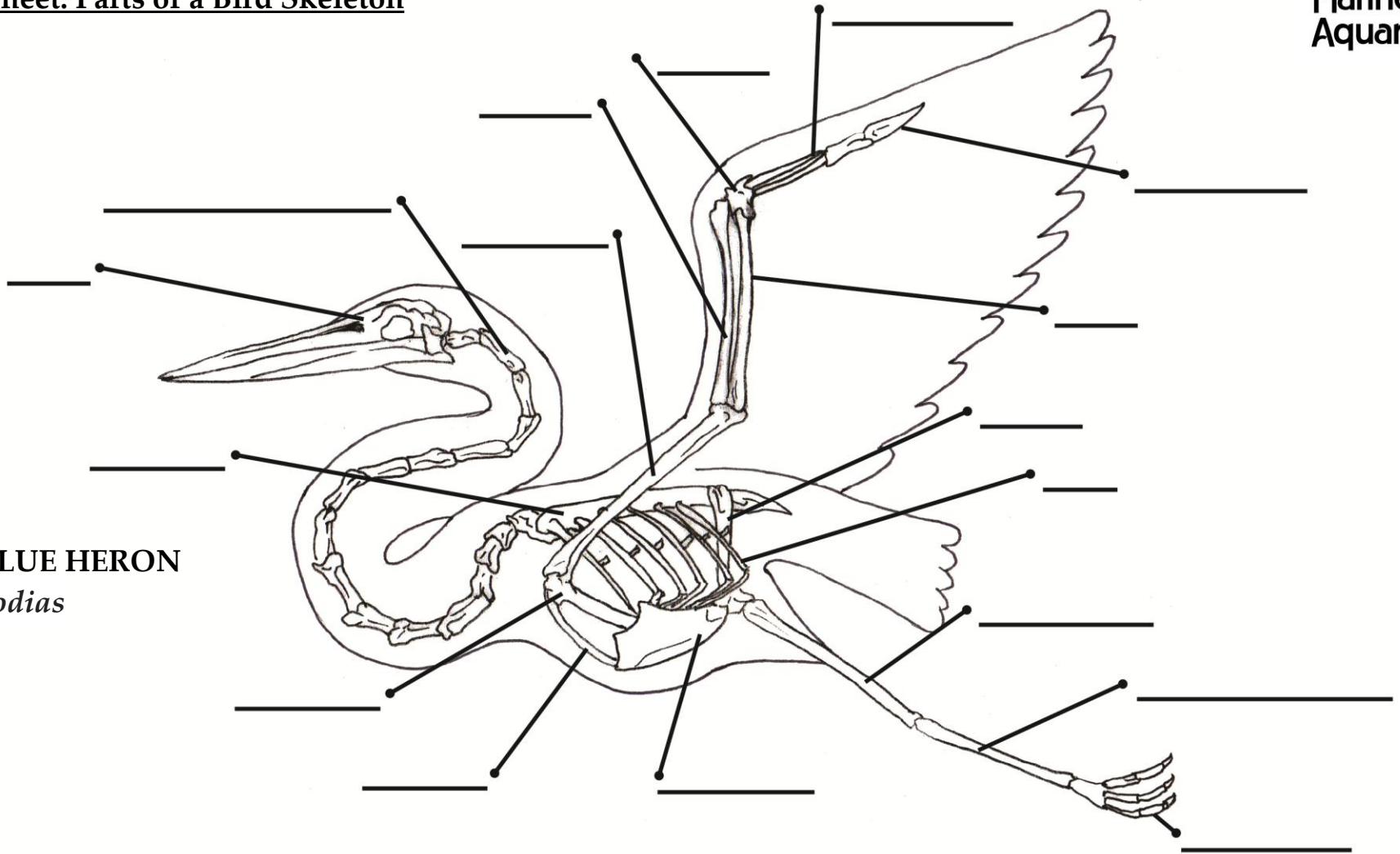
Cabrillo Marine Aquarium

Name: _____

Date: _____

Worksheet: Parts of a Bird Skeleton

GREAT BLUE HERON
Ardea herodias



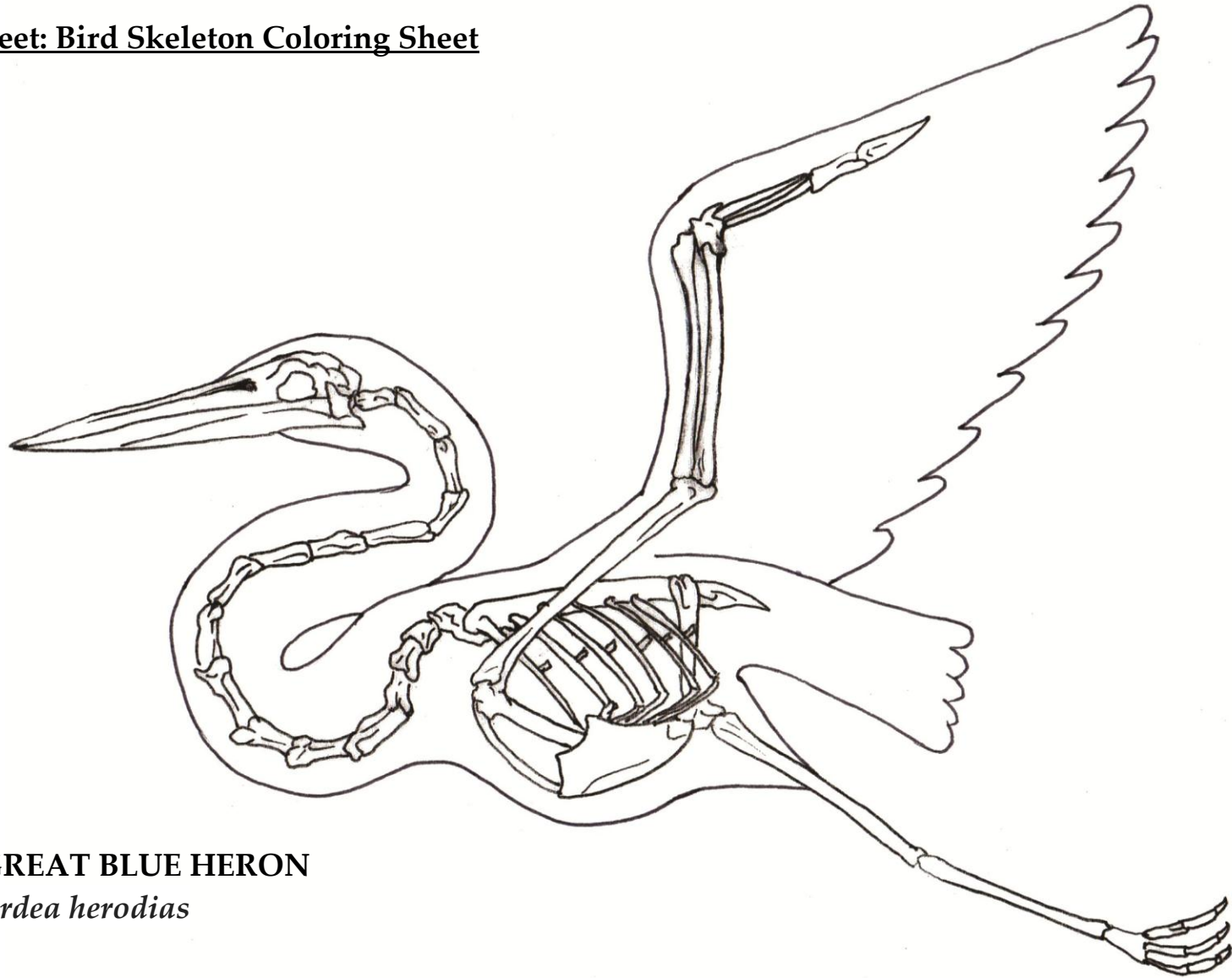


Cabrillo
Marine
Aquarium

Name: _____

Date: _____

Worksheet: Bird Skeleton Coloring Sheet



GREAT BLUE HERON

Ardea herodias